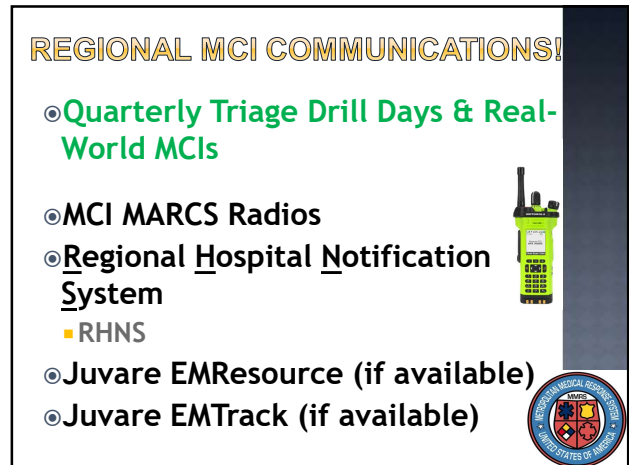
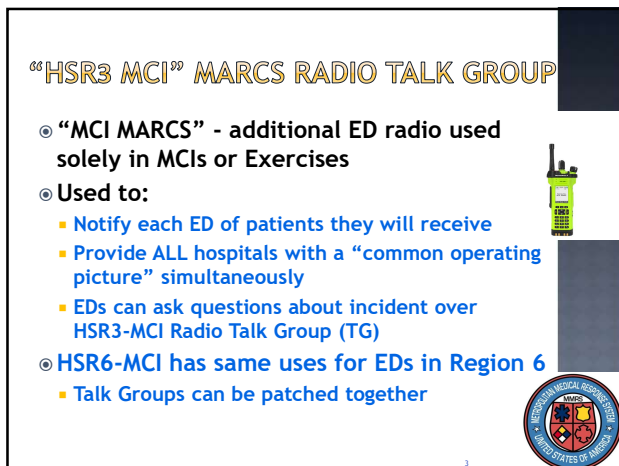




1



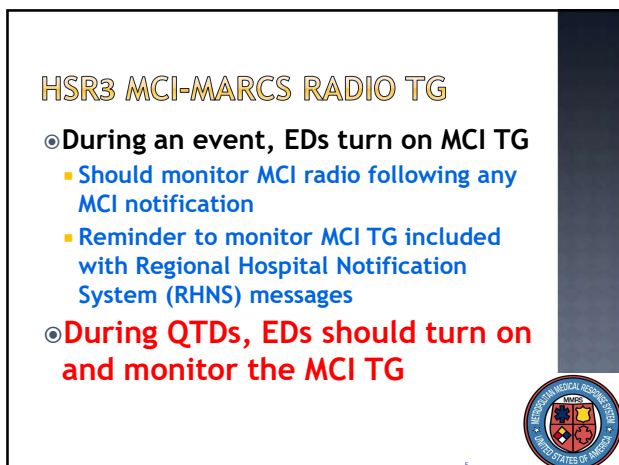
2



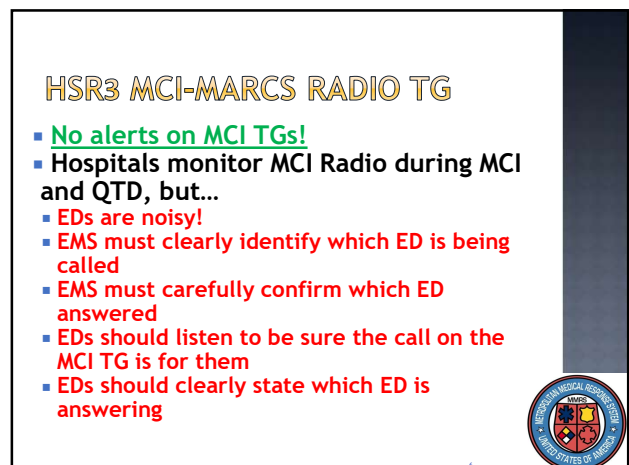
3



4



5



6

MCI-STYLE REPORTS ON QTDS

- During QTDS, make **BRIEF, MCI-style reports** to the ED on the MCI Talk Group
- Make a report for every patient during **ENTIRE 24 HOURS** of QTD (2000 hours - 2000 hours).
- During an actual MCI, individual EMS Units **DO NOT "CALL-IN" to ED with REPORT!**
 - ONLY the TRANSPORT Officer/Aide makes those calls**
 - MCI-style reports during QTDS are an opportunity to practice as if YOU are the Transport Officer
- MCI Reports are **DIFFERENT!**
 - When you have 40 patients, you canNOT do the typical report!
 - No vital signs, no EKG findings, no medical hx
 - Short, sweet, to the point!
 - Example: "Wayne Hospital, this is Greenville Medic 591 enroute with one Yellow, possible fractured ankle."



7

REGIONAL HOSPITAL NOTIFICATION SYSTEM (RHNS)

- One number for EMS, hospitals, and EMAs to call:
 - 937-333-USAR (8727)**
- Rapid, simultaneous notifications during MCI or other major emergency
- Use whenever incident could involve a significant number of region's hospitals
 - Also used to indicate no need for action
- Montgomery County RDC puts out computerized message for region



8

MCI JOB AID FOR RHNS

- Sent to all agencies, hospitals, and EDs in region
- Transport Officer Clipboard on each apparatus should have a copy of the job aid
 - Should also have a copy on Command Vehicles
- Job Aid provides personnel with everything needed to activate RHNS
- Download from GDAHA or Dayton MMRS website



9

Regional Hospital Notification System (RHNS) GDAHA/GMVMSC/MMRS Mass Casualty Incident (MCI)/Emergency Communications Job Aid

ACTION:	PERFORMED BY:
1. To Receive or Activate (RHNS): • Call 937-333-8727 (333-USAR) • Ask to speak with RDC Supervisor • Request activation of Regional Hospital Notification System - use the phrase, "MASS CASUALTY PAGE." • Provide the following information: A. Name of agency B. There is an MCI/Emergency situation reported at _____ (location) as a result of _____ (cause: bus crash, tornado, haz-mat spill, etc.) C. General statement on severity, e.g., rough number of victims and other information. D. Include these statements: • "Hospitals: update EMResource Triage Capacity" • Monitor HSR4 MCI-MARCS talkgroup	First agency or facility aware of MCI or Emergency Situation
2. Activate ED's MCI Radio and have it monitored continuously (No alert tones on MCI Talk Group)	Hospitals
3. MCI Talk Group is used by ALL EDs - you MUST LISTEN carefully for your ED to be called	Hospitals
4. EMS Transport Officer or aide will use MCI Talk Group to communicate all information to hospitals	EMS
5. MCI Talk Group is used by ALL EDs. EMS MUST clearly announce what facility you are calling, and may need to announce ED name repeatedly	EMS
6. Update Juvenile EMResource Triage Capacity	Hospitals
7. Prepare to receive patients; make appropriate notifications within your agency; consider Code Yellow	Hospitals
8. Log on to Juvenile EMTrack and find or create the Incident (may call OFCA-ERS at 1-888-822-4000 for incident creation)	Availability of ERS TBD
9. On resolution of incident, send an update via RHNS	Hospital or EMS

Version 5.0 10/20/2019

1

March 21, 2024



10

- EMS and Dispatch Centers can monitor Juvenile EMResource during an MCI to see capacity by triage categories
- Check it out during each QTD

Hospital	Green	Yellow	Orange	Red	Black	Other
Antony Health System (Cincinnati)	10	10	10	10	10	10
Antony Health System (Dayton)	10	10	10	10	10	10
Antony Health System (Columbus)	10	10	10	10	10	10
Antony Health System (Cleveland)	10	10	10	10	10	10
Antony Health System (Akron)	10	10	10	10	10	10
Antony Health System (Toledo)	10	10	10	10	10	10
Antony Health System (Cincinnati)	10	10	10	10	10	10
Antony Health System (Dayton)	10	10	10	10	10	10
Antony Health System (Columbus)	10	10	10	10	10	10
Antony Health System (Cleveland)	10	10	10	10	10	10
Antony Health System (Akron)	10	10	10	10	10	10
Antony Health System (Toledo)	10	10	10	10	10	10

11



- Juvenile is same system used to monitor hospital diversion

Hospital	Green	Yellow	Orange	Red	Black	Other
Antony Health System (Cincinnati)	10	10	10	10	10	10
Antony Health System (Dayton)	10	10	10	10	10	10
Antony Health System (Columbus)	10	10	10	10	10	10
Antony Health System (Cleveland)	10	10	10	10	10	10
Antony Health System (Akron)	10	10	10	10	10	10
Antony Health System (Toledo)	10	10	10	10	10	10
Antony Health System (Cincinnati)	10	10	10	10	10	10
Antony Health System (Dayton)	10	10	10	10	10	10
Antony Health System (Columbus)	10	10	10	10	10	10
Antony Health System (Cleveland)	10	10	10	10	10	10
Antony Health System (Akron)	10	10	10	10	10	10
Antony Health System (Toledo)	10	10	10	10	10	10


12


EMTRACK ENTRY


- If you have access to Juvare EMTrack:
- Scan and enter each Tag
 - Use Barcode NOT QR Code





Scan this:





Not that: 



13